

The Troilus K Property

Highlights :

- **On-strike with the Troilus Mine (historical production 1997-2005 : 1.4 Moz)**
- **Never drilled. Within 3 km from the J-4 zone open pit.**
- **Geological mapping in 1989 reports a felsic volcanic angular boulder grading an average of 10.1 g/t gold and a quartz vein grading 5.6 g/t gold.**

Ownership: 100% Les Ressources Tectonic Inc.

Description: The Troilus K Property consists of 11 mining claims, covering 595 ha.

Location: The Property is located on NTS sheet TS 320/01, 120 km North of Chibougamau. The road deservng the Troilus Mine goes up to 3 km of the Property.

Geology: The Troilus K Property is located in the Frotet-Evans greenstone belt. It covers a 4 km strike length of the contact zone between the granodioritic Parker pluton and a narrow band of felsic to mafic volcanics. This package is directly on-strike with the Troilus Mine orebodies, 3 km to the South-West. The Troilus Mine started production in 1997 and produced 1.4 Moz gold from two open pits. At the end of 2005, the Mine reported indicated mineral resources of 29.4 Mt at 1.48g/t gold. The J-4 zone open pit is located within 3 km of the Troilus K Property.

Mineralization: The Troilus K Property was only covered by a mag-VLF survey and by geological mapping in 1989 by Inmet. During the course of mapping, several anomalous gold values were reported from a pyrite bearing intermediate volcanic located near the contact of the Parker pluton. An angular, metric boulder of the same rock type also reported an average of 10.1 g/t gold (average of 5 samples and 16 re-assays). Also, a centimetric quartz vein cutting gabbros away from the Parker pluton contact reported a grab sample of 5.6 g/t gold

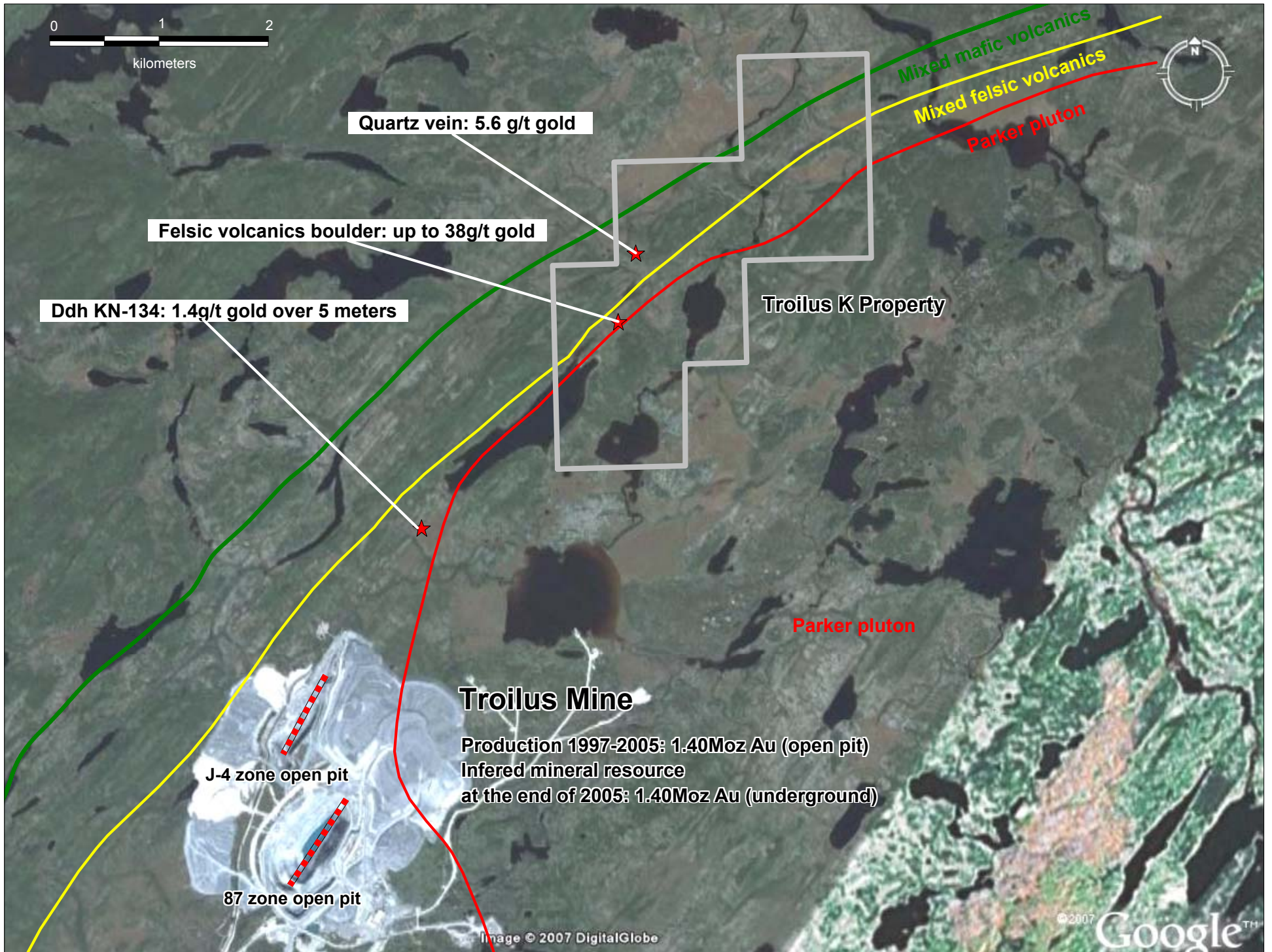
Potential : Even if the Troilus K is located on strike and less than 3 km from an active gold mine, work on the Property was extremely limited. There is no drill hole reported on the entire Property. The mineralized boulder located during the course of mapping in 1989 is significant as the Troilus orebody was discovered while following-up a glacial dispersion fan by drilling. A 500 by 200 m area showing tens of mineralized boulders were pointing to a local source, located to the North-East. A drill hole spotted at the head of the dispersion train hit the main Troilus mine orebody under shallow overburden. The mineralized boulder found on the Troilus K Property is angular and of the same composition as the surrounding intermediate volcanics shown to be frequently anomalous in gold. As the main ice transport direction is from the North-East to the South-West, the source of the boulder is likely to be on the Property.

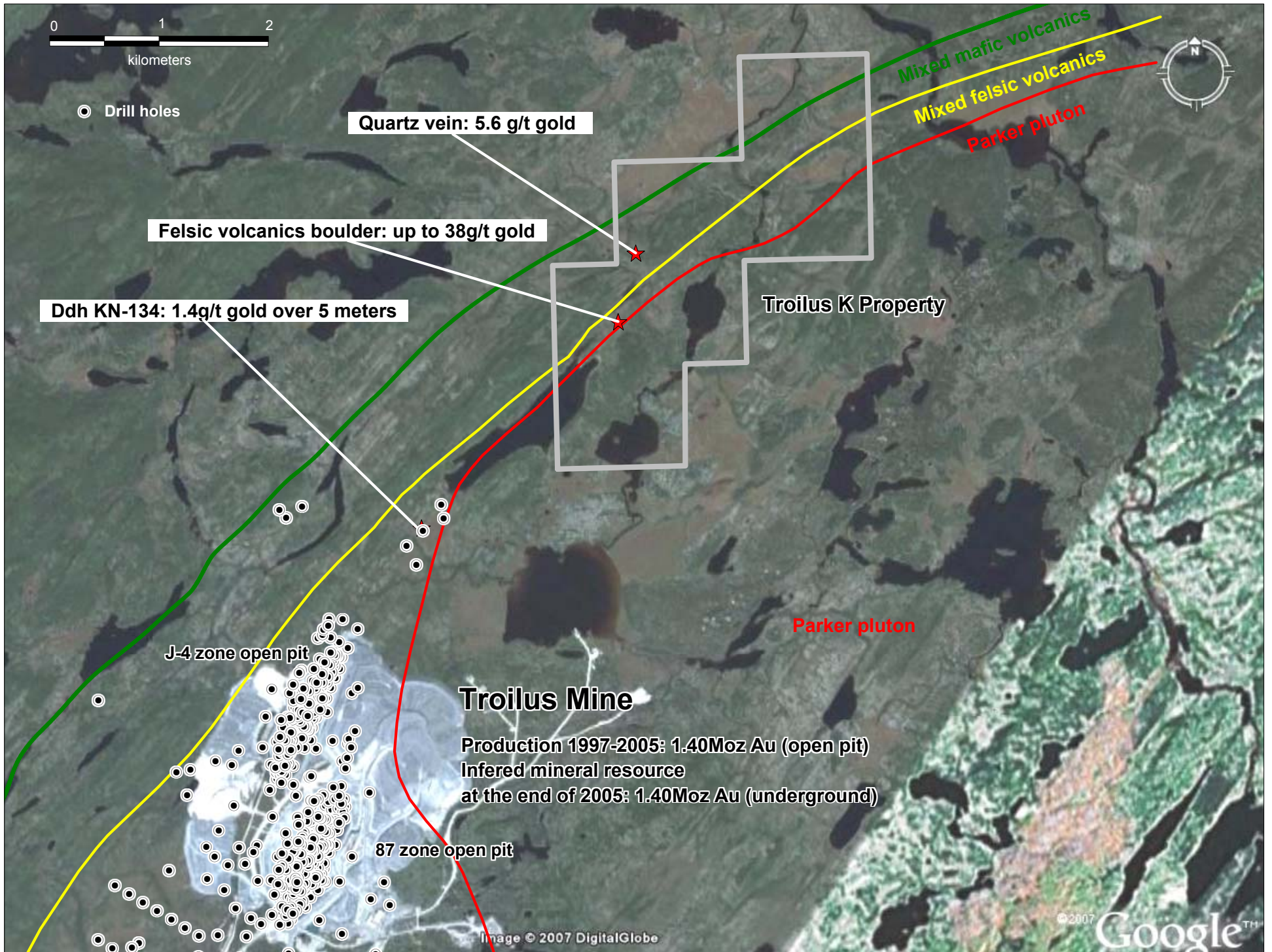
Detail prospecting and systematic sampling of boulders is recommended for the entire Property and should be particularly intense in the intermediate volcanic unit located near the contact of the Parker pluton. The best areas should then be covered by an induced polarization survey.

Les Ressources Tectonic Inc.

140 avenue du Collège
Beauport, QC
G1E 2Y7

Web : www.ressourcestectonic.com
E-mail : info@ressourcestectonic.com
Tel : 418-880-0422





0 1 2
kilometers



○ Drill holes

Quartz vein: 5.6 g/t gold

Felsic volcanics boulder: up to 38g/t gold

Ddh KN-134: 1.4g/t gold over 5 meters

Mixed mafic volcanics
Mixed felsic volcanics
Parker pluton

Troilus K Property

Parker pluton

J-4 zone open pit

Troilus Mine

Production 1997-2005: 1.40Moz Au (open pit)
Inferred mineral resource
at the end of 2005: 1.40Moz Au (underground)

87 zone open pit

Image © 2007 DigitalGlobe

© 2007 Google™